

KEYBOARD MODULE
BKE 6010
MANUAL

CONTENT

1. MODULE BKE 6010	3
1. 1. Introduction	3
1. 2. Module construction	3
2. BASIC PARAMETERS MODULE BKE 6010	3
2. 1. Module design and electrical parameters	3
3. CONNECTION MODULE BKE 6010	4
3. 1. Connection of connectors	4

1. KEYBOARD MODULE BKE 6010

1.1. INTRODUCTION

The BKE 6010 keyboard module is primarily intended as a module to augment the ArdoPLC unit with a communication element between the operator and the unit. However, there is nothing to prevent it from being used in other applications. The module can be purchased separately as all ArdoPLC modules. The module contains a rotary switch equipped with a button. The module contains RC members and a schmitt circuit. This achieves maximum suppression of unwanted pulses.

1.2. MODULE CONSTRUCTION

The BKE 6010 keyboard module contains a quality rotary switch. The switch is a company ZIPPY type AN product. The module contains RC members and a schmitt circuit. This achieves maximum suppression of unwanted pulses. The power supply of the module is 5V. Pinhead connectors are used to connect the module. Their involvement will be set out below.

2. BASIC PARAMETERS MODULE BKE 6010

2.1. MODULE DESIGN AND ELECTRICAL PARAMETERS

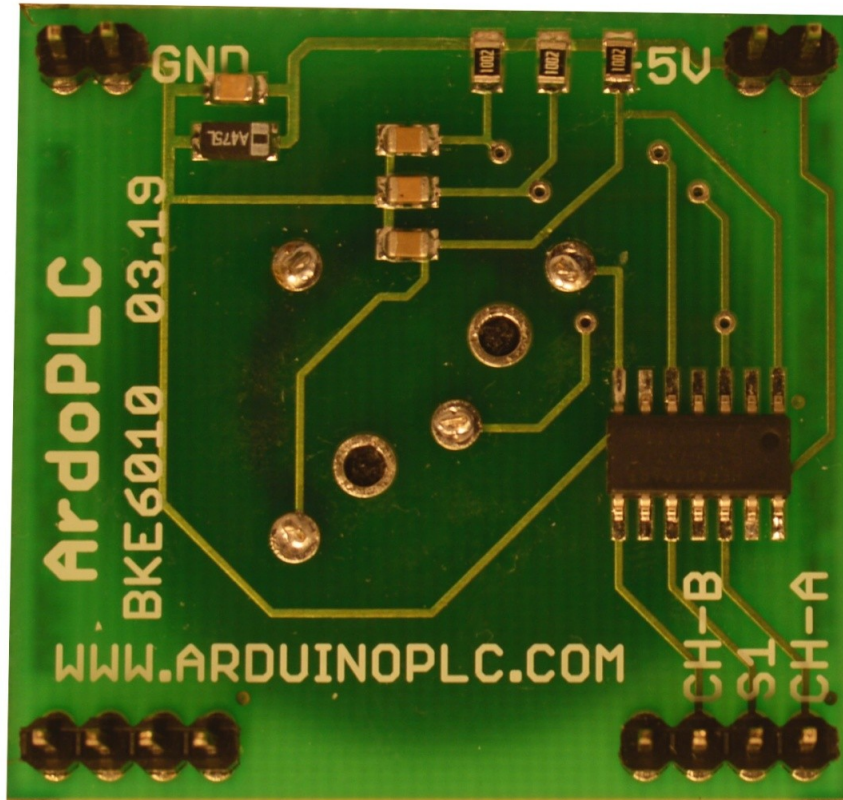
Tab 2.1 Basic parameters

Dimension (length x width x height)	41 x 39 x 17mm
Power module	
Power supply Module power input	5V DC Max 0,05W
Connection	
Connectors	Pin head connector

3. CONNECTION MODULE BKE 6010

3.1. CONNECTION OF CONNECTORS

The image and table below show connection of connector



PIN CONNECTOR	PIN FUNCTION
1. CH-A	Channel A output
2. S1	Push button
3. CH-B	Channel B output
4.	Not use

Connectors identified as " GND " and " 5V " are used to connect the power supply voltage 5V DC. The remaining unmarked connector is unused.